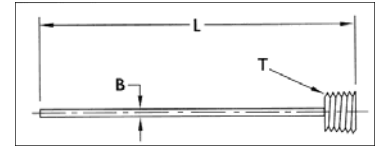


## TEVAC BRASS PLUG BAFFLES STRAIGHT BRASS BAFFLES

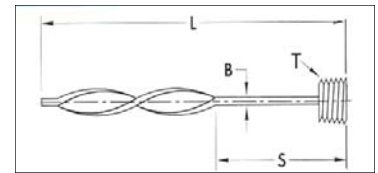


TEVAC'S Brass Plug Baffles are made from solid brass with blades brazed to the plugs for long, dependable service. They provide a high pressure seal through a deliberate difference of taper between the plug and the tapered hole. The function of the baffle is to split the drilled waterline into two semi-circular channels. As the heating or cooling medium enters, the baffle diverts the flow to travel up to the end of the baffle and down the other side. Clearance must be provided between the end of the baffle and the end of the drilled channel to provide adequate flow. A slot indicating baffle position is provided on the end of each plug.

Part Number	"Nominal" Plug Size	Thread +.000 Length -.015	"Nominal" Length Overall	Baffle Width *	Drill Size	Baffle Thickness	Hex Size (S)
BB-10-4	1/8	.250	4"	5/16	5/16	.050	3/16
BB-10-8	1/8	.250	8"	5/16	5/16	.050	3/16
BB-20-5	1/4	.406	5"	7/16	7/16	.080	1/4
BB-20-10	1/4	.406	10"	7/16	7/16	.080	1/4
BB-40-6	3/8	.406	6"	9/16	9/16	.090	5/16
BB-40-12	3/8	.406	12"	9/16	9/16	.090	5/16
BB-60-8	1/2	.531	8"	11/16	11/16	.090	3/8
BB-60-16	1/2	.531	16"	11/16	11/16	.090	3/8
BB-100-12	3/4	.531	12"	15/16	15/16	.090	9/16
BB-100-20	3/4	.531	20"	15/16	15/16	.090	9/16
BB-14-16	1	.656	16"	1-1/8	1-1/8	.105	5/8
BB-140-24	1	.656	24"	1-1/8	1-1/8	.105	5/8

\* Tolerance of Baffle Width is -.005 to -.015

## TEVAC TURBO BRASS BAFFLES



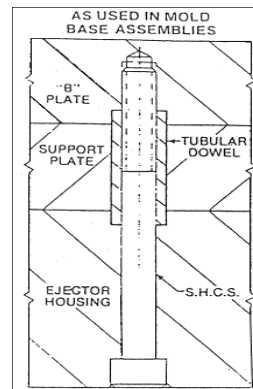
Part Number	Plug Size	Overall Length	Baffle Width	Drill Size	Straight Length	Baffle Thickness
BBT-5-4	1/16 NPT	4	1/4	1/4	2	.050
BBT-5-8	1/16 NPT	8	1/4	1/4	4	.050
BBT-10-4	1/8 NPT	4	5/16	5/16	2	.050
BBT-10-8	1/8 NPT	8	5/16	5/16	4	.050
BBT-20-5	1/4 NPT	5	7/16	7/16	2	.080
BBT-20-10	1/4 NPT	10	7/16	7/16	4	.080
BBT-40-6	3/8 NPT	6	9/16	9/16	2	.090
BBT-40-12	3/8 NPT	12	9/16	9/16	4	.090
BBT-60-8	1/2 NPT	8	11/16	11/16	3	.090
BBT-60-16	1/2 NPT	16	11/16	11/16	5	.090
BBT-100-12	3/4 NPT	12	15/16	15/16	4	.090
BBT-100-20	3/4 NPT	20	15/16	15/16	6	.090
BBT-140-16	1" NPT	16	1-1/8	1-1/8	5	.105
BBT-140-24	1" NPT	24	1-1/8	1-1/8	8	.105

For Correct Product, order by Part No., followed by "L" Length. Example: TD-3/4-1/2

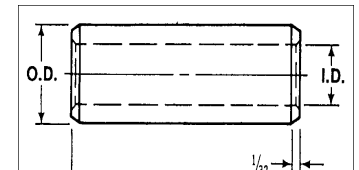
Tevac Part Number	Nominal Diameter	+O.D. -.0002	I.D.
TD-3/8-	3/8	.3752	.260
TD-5/8-	5/8	.6252	.385
TD-3/4-	3/4	.7502	.510
TD-7/8-	7/8	.8752	.635

### Length

3/8  
1/2  
7/8  
1-3/8  
1-7/8  
2-3/8  
2-7/8



## TEVAC'S TUBULAR DOWELS



Head thickness .020 oversize to permit fitting at assembly

TEVAC'S Tubular Dowels are hardened and precision ground. They are used in mold base assemblies to accurately align the "B" plate, support plate and the ejector housing.

- FOR STEAM, WATER, OR OIL LINES
- POSITIVE TAPERED SEAL

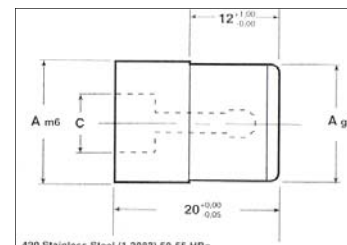
## INSERTS

Tevac P/N INSERTS	"C" - W/ YEAR	Tevac P/N INSERTS	"C" - BLANK W/O YEAR
DS132 + yr	3,2mm	DS1A32	3,2mm
DS147 + yr	4,7mm	DS1A47	4,7mm
DS157 + yr	5,7mm	DS1A57	5,7mm
DS167 + yr	6,7mm	DS1A67	6,7mm
DS187 + yr	8,7mm	DS1A67	8,7mm

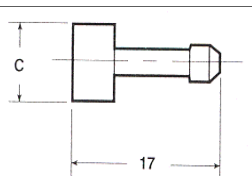
## OUTER RING

Tevac P/N OUTER RING	"C"- Inches	"C"- mm	"A"- Inches	"A"- mm
DSOM32	.1259	3,2	.2362	6
DSOM47	.1850	4,7	.3149	8
DSOM57	.2244	5,7	.3937	10
DSOM67	.2637	6,7	.4724	12
DSOM87	.3425	8,7	.6299	16

The 'CUMSA SYSTEM' DATE STAMPS are the most molder friendly in the industry today. There is no need to remove the tool from the press to adjust or replace the insert. **To Order:** Fill in Year Required After Part Number **Example:** For item DS157 with Year 1998, Part Number would be DS157-98.



## TEVAC DATE STAMPS



01 Tool Steel (1.2510) 55-60 HRC