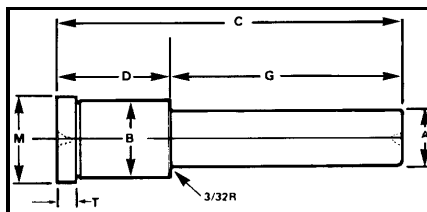


TEVAC SHOULDER LEADER PINS
1/2" & 17/32"

1/2" Part No.	D	G	C	17/32" Part No.
LPSH-050-1	7/8	7/8	1-3/4	LPSH-053-1
LPSH-050-2		1-3/8	2-1/4	LPSH-053-2
LPSH-050-3		1-7/8	2-3/4	LPSH-053-3
LPSH-050-4		2-3/8	3-1/4	LPSH-053-4
LPSH-050-5	1-3/8	7/8	2-1/4	LPSH-053-5
LPSH-050-6		1-3/8	2-3/4	LPSH-053-6
LPSH-050-7	1-7/8	1-7/8	3-1/4	LPSH-053-7
LPSH-050-8		7/8	2-3/4	LPSH-053-8
LPSH-050-9		1-3/8	3-1/4	LPSH-053-9
LPSH-050-10	2-3/8	1-7/8	3-3/4	LPSH-053-10
LPSH-050-11		7/8	3-1/4	LPSH-053-11
LPSH-050-12	2-7/8	1-3/8	4-1/4	LPSH-053-12



GENERAL DIMENSIONS AND TOLERANCES				
Nominal Size	A	B	M	T
1/2"	.499	.751	.853	3/16
17/32"	.530	.751	.853	3/16
	+ .0000 - .0000	+ .0005 - .0000	(MAX)	

SHOULDER

1/2" Part No.	C	17/32" Part No.
BSH-050-1	7/8	BSH-053-1
BSH-050-2	1-3/8	BSH-053-2
BSH-050-3	1-7/8	BSH-053-3
BSH-050-4	2-3/8	BSH-053-4

GENERAL DIMENSIONS & TOLERANCES

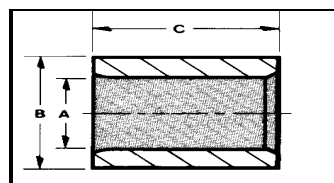
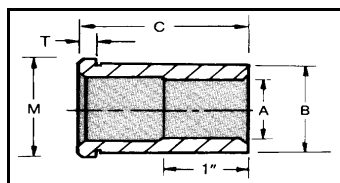
Nominal Size	A	B	M	T
1/2"	.500	.7505	.853	3/16
17/32"	.531	.7505	.853	3/16
	+ .0005 - .0000	+ .0005 - .0000	(MAX)	

TEVAC BUSHINGS
1/2" & 17/32"



STRAIGHT

1/2" Part No.	C	17/32" Part No.
BS-050-1	7/8	BS-053-1
BS-050-2	1-3/8	BS-053-2

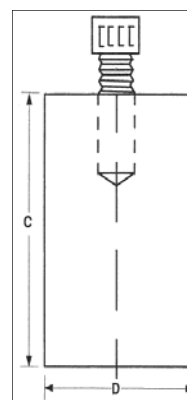


D DIA.	C HEIGHT	PART NUMBER
1"	2.5	TH-1025
	3.0	TH-1030
	3.5	TH-1035
	4.0	TH-1040
	4.5	TH-1045
1.25"	2.5	TH-1225
	3.0	TH-1230
	3.5	TH-1235
	4.0	TH-1240
	4.5	TH-1245
	5.0	TH-1250
	6.0	TH-1260
1.5"	2.5	TH-1525
	3.0	TH-1530
	3.5	TH-1535
	4.0	TH-1540
	4.5	TH-1545
	5.0	TH-1550
	6.0	TH-1560

D DIA.	C HEIGHT	PART NUMBER
1.75"	2.5	TH-1725
	3.0	TH-1730
	3.5	TH-1735
	4.0	TH-1740
	4.5	TH-1745
	5.0	TH-1750
	6.0	TH-1760
2"	2.5	TH-2025
	3.0	TH-2030
	3.5	TH-2035
	4.0	TH-2040
	4.5	TH-2045
	5.0	TH-2050
	6.0	TH-2060
	2.5"	3.0
3.5		TH-2535
4.0		TH-2540
4.5		TH-2545
5.0		TH-2550
6.0		TH-2560

TEVAC SUPPORT PILLARS
INDUSTRY STANDARD TAPPED HOLE

D DIA.	C HEIGHT	PART NUMBER
3"	3.0	TH-3030
	3.5	TH-3035
	4.0	TH-3040
	4.5	TH-3045
3"	5.0	TH-3050
	6.0	TH-3060
	8.0	TH-3080



- Constructed from the Highest quality SAE 1040 Steel.
- Precision ground heights are flat and parallel.
 - Tapped hole.
- SHCS included at **no charge**
 - up to 2" diameter requires 3/8-16 screw.
 - 2" and up requires 5/8-11 screw

Note: Doweled & Drilled & Counterbored Styles also available. Call for pricing.

SPECIALS MADE UPON REQUEST !

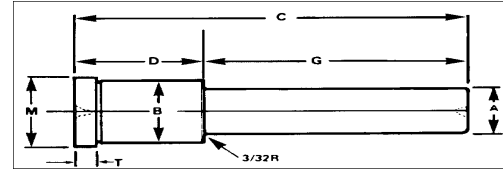
TEVAC'S Shoulder Leader Pins are available in a standard range which has been established after careful investigation within the Plastic Molding & Pressure Diecasting Industries. The selection of the best steels, properly controlled heat treatment and grinding to high standards of accuracy ensure that TEVAC'S Leader Pins & Bushings will give long & trouble free life. Shoulder type leader pins are designed to allow the moldmaker to line bore one size hole to accept both the shoulder pin & bushing, as both the O.D. of the shoulder and of the bushing of the same size & tolerance.

TEVAC
SHOULDER LEADER PINS
3/4, 1" & 1-1/4"

Part No.	D	G	C	Part No.	D	G	C
LPSH-087-1-	7/8	7/8	1-3/4	LPSH-287-1-	2-7/8	1-3/8	4-1/4
LPSH-087-2-		1-3/8	2-1/4	LPSH-287-2-		1-7/8	4-3/4
LPSH-087-3-		1-7/8	2-3/4	LPSH-287-3-		2-3/8	5-1/4
LPSH-087-4-		2-3/8	3-1/4	LPSH-287-4-		2-7/8	5-3/4
LPSH-087-5-		2-7/8	3-3/4	LPSH-287-5-		3-3/8	6-1/4
LPSH-137-1-	1-3/8	7/8	2-1/4	LPSH-287-6-	3-3/8	3-7/8	6-3/4
LPSH-137-2-		1-3/8	2-3/4	LPSH-287-7-		4-3/8	7-1/4
LPSH-137-3-		1-7/8	3-1/4	LPSH-337-1-		1-7/8	5-1/4
LPSH-137-4-		2-3/8	3-3/4	LPSH-337-2-		2-3/8	5-3/4
LPSH-137-5-		2-7/8	4-1/4	LPSH-337-3-		2-7/8	6-1/4
LPSH-137-6-	1-7/8	3-3/8	4-3/4	LPSH-337-4-	3-7/8	3-3/8	6-3/4
LPSH-187-1-		7/8	2-3/4	LPSH-337-5-		4-3/8	7-3/4
LPSH-187-2-		1-3/8	3-1/4	LPSH-387-1-		2-3/8	6-1/4
LPSH-187-3-		1-7/8	3-3/4	LPSH-387-2-		2-7/8	6-3/4
LPSH-187-4-		2-3/8	4-1/4	LPSH-387-3-		3-3/8	7-1/4
LPSH-187-5-	2-3/8	2-7/8	4-3/4	LPSH-387-4-	4-3/8	3-7/8	7-3/4
LPSH-187-6-		3-3/8	5-1/4	LPSH-437-1-		2-7/8	7-1/4
LPSH-187-7-		3-7/8	5-3/4	LPSH-437-2-		3-3/8	7-3/4
LPSH-237-1-		7/8	3-1/4	LPSH-437-3-		3-7/8	8-1/4
LPSH-237-2-		1-3/8	3-3/4	LPSH-437-4-		4-3/8	8-3/4
LPSH-237-3-	4-7/8	1-7/8	4-1/4	LPSH-437-5-	4-7/8	4-7/8	9-1/4
LPSH-237-4-		2-3/8	4-3/4	LPSH-487-1-		3-7/8	8-3/4
LPSH-237-5-		2-7/8	5-1/4	LPSH-487-2-		4-3/8	9-1/4
LPSH-237-6-		3-3/8	5-3/4	LPSH-487-3-		4-7/8	9-3/4
LPSH-237-7-		3-7/8	6-1/4	LPSH-487-4-		5-7/8	10-3/4
	5-7/8			LPSH-587-1-	5-7/8	3-7/8	9-3/4
				LPSH-587-2-		4-3/8	10-1/4
				LPSH-587-3-		4-7/8	10-3/4
				LPSH-587-4-		5-7/8	11-3/4

DIAMETERS

A = 3/4"
A = 1"
A = 1-1/4"



GENERAL DIMENSIONS & TOLERANCES

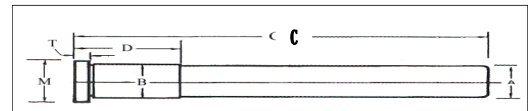
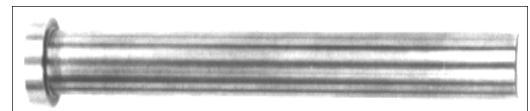
Nominal Size	A	B	M	T
3/4"	.749	1.126	1.250	.312
1"	.999	1.376	1.500	.312
1-1/4"	1.249	1.626	1.750	.312
Tolerances	+0.0000	+0.0005	+0.000	+0.000
	-0.0005	-0.0000	-0.010	-0.005

For Correct Product, order by Part No., followed by "A" diameter. Example: LPSH-087-1-3/4.

For Correct Product, order by Part No., followed by "A" dimension. Example: LP-175-A3/4.

Part Number	C	A=3/4"	A=7/8"	A=1"	A=1-1/4"	A=1-1/2"	A=2"	A=2-1/2"
		D	D	D	D	D	D	D
LP-175-	1-3/4	7/8	7/8	7/8	-	-	-	-
LP-225-	2-1/4	7/8	7/8	7/8	-	-	-	-
LP-275-	2-3/4	7/8	7/8	7/8	7/8	-	-	-
LP-325-	3-1/4	7/8	7/8	7/8	7/8	-	-	-
LP-375-	3-3/4	7/8	7/8	7/8	7/8	1-3/8	-	-
LP-425-	4-1/4	1-3/8	1-3/8	1-3/8	7/8	1-3/8	-	-
LP-475-	4-3/4	1-3/8	1-3/8	1-3/8	1-3/8	1-3/8	-	-
LP-525-	5-1/4	1-3/8	1-3/8	1-3/8	1-3/8	1-3/8	-	-
LP-575-	5-3/4	1-7/8	1-3/8	1-3/8	1-3/8	1-3/8	1-7/8	2-3/8
LP-625-	6-1/4	1-7/8	1-7/8	1-3/8	1-3/8	1-3/8	-	-
LP-675-	6-3/4	1-7/8	1-7/8	1-7/8	1-7/8	1-3/8	1-7/8	2-3/8
LP-725-	7-1/4	1-7/8	1-7/8	1-7/8	1-7/8	-	-	-
LP-775-	7-3/4	1-7/8	1-7/8	1-7/8	1-7/8	1-7/8	1-7/8	2-3/8
LP-825-	8-1/4	-	1-7/8	1-7/8	1-7/8	-	-	-
LP-875-	8-3/4	-	1-7/8	1-7/8	1-7/8	1-7/8	1-7/8	2-3/8
LP-925-	9-1/4	1-7/8	-	1-7/8	1-7/8	-	-	-
LP-975-	9-3/4	-	-	1-7/8	1-7/8	1-7/8	1-7/8	2-3/8
LP-1025-	10-1/4	-	-	1-7/8	1-7/8	-	-	-
LP-1075-	10-3/4	-	1-7/8	1-7/8	1-7/8	1-7/8	1-7/8	2-3/8
LP-1125-	11-1/4	-	-	1-7/8	1-7/8	-	-	-
LP-1175-	11-3/4	-	-	1-7/8	1-7/8	1-7/8	1-7/8	2-3/8
LP-1225-	12-1/4	-	1-7/8	1-7/8	1-7/8	-	-	-
LP-1275-	12-3/4	-	-	-	1-7/8	1-7/8	1-7/8	2-3/8
LP-1375-	13-3/4	-	-	-	1-7/8	1-7/8	1-7/8	2-3/8
LP-1475-	14-3/4	-	-	-	1-7/8	1-7/8	1-7/8	2-3/8
LP-1575-	15-3/4	-	-	-	1-7/8	1-7/8	1-7/8	2-3/8
LP-1675-	16-3/4	-	-	-	-	-	2-3/8	2-3/8
LP-1875-	18-3/4	-	-	-	-	-	2-3/8	2-3/8

TEVAC STRAIGHT LEADER PINS
HARDENED AND PRECISION GROUND



Tevac Straight Leader Pins are available in a complete range from 3/4" to 2-1/2" to suit the varied requirements of plastic molds and die cast dies. Made from the finest quality alloy steels, hardened and precision ground for mating bushings.

GENERAL DIMENSIONS

Nominal Size	A	B	M	T
3/4	.749	.751	.990	3/16
7/8	.874	.876	1.115	1/4
1"	.999	1.001	1.240	1/4
1-1/4	1.249	1.251	1.490	5/16
1-1/2	1.499	1.501	1.740	5/16
2"	1.999	2.001	2.240	5/16
2-1/2	2.499	2.501	2.740	5/16

TOLERANCES

PIN DIAMETER (A)	+0.0000
	-0.0005
PRESS FIT (B)	+0.0005
	-0.0000
HEAD DIAMETER (M)	+0.000
	-0.010
HEAD THICKNESS(T)	+0.000
	-0.005

**TEVAC OFFERS THIN SHOULDER LEADER PINS
AND MATCHING THIN WALL BUSHINGS**

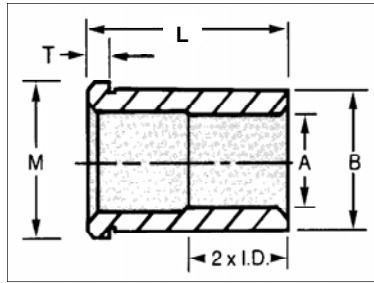
ID=3/4" BUSHINGS

Others #	Tevac #	L
H15A	BSHT-4-3/4	2-3/8
H16A	BSHT-5-3/4	2-7/8
H17A	BSHT-6-3/4	3-3/8
H18A	BSHT-7-3/4	3-7/8
H19A	BSHT-8-3/4	4-3/8

ID=1" BUSHINGS

Others #	Tevac #	L
H15C	BSHT-4-1	2-3/8
H16C	BSHT-5-1	2-7/8
H17C	BSHT-6-1	3-3/8
H18C	BSHT-7-1	3-7/8
H11C	BSHT-10-1	5-7/8

Nom. ID	A	B	M	T
3/4"	.7505	1.001	1.125	.187
1"	1.001	1.251	1.375	.250
Tolerances	+0.000	+0.0005	+0.000	+0.0000
	-0.0005	-0.0000	-0.010	-0.005



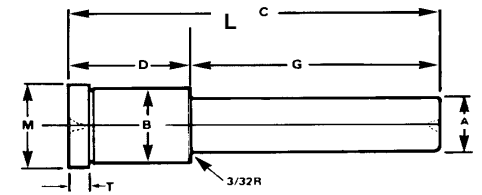
3/4" SHOULDER LEADER PINS

Others #	Tevac #	D	G	L
F4A041	LPSHT-187-4-3/4	1-7/8	2-1/4	4-1/8
F4A055	LPSHT-187-7-3/4	1-7/8	3-3/4	5-5/8
F5A041	LPSHT-237-2-3/4	2-3/8	1-3/4	4-1/8
F5A045	LPSHT-237-3-3/4	2-3/8	2-1/4	4-5/8
F5A051	LPSHT-237-4-3/4	2-3/8	2-3/4	5-1/8
F5A065	LPSHT-237-7-3/4	2-3/8	4-1/4	6-5/8
F6A051	LPSHT-287-3-3/4	2-7/8	2-1/4	5-1/8
F6A055	LPSHT-287-4-3/4	2-7/8	2-3/4	5-5/8
F7A055	LPSHT-337-2-3/4	3-3/8	2-1/4	5-5/8
F7A061	LPSHT-337-3-3/4	3-3/8	2-3/4	6-1/8
F8A061	LPSHT-387-2-3/4	3-7/8	2-1/4	6-1/8

1" SHOULDER LEADER PINS A=1"

Others #	Tevac #	D	G	L
F5C045	LPSHT-237-3-1	2-3/8	2-1/4	4-5/8
F5C051	LPSHT-237-4-1	2-3/8	2-3/4	5-1/8
F6C051	LPSHT-287-3-1	2-7/8	2-1/4	5-1/8
F6C055	LPSHT-287-4-1	2-7/8	2-3/4	5-5/8
F6C075	LPSHT-287-8-1	2-7/8	4-3/4	7 5/8

Nom. ID	A	B	M	T
3/4"	.749	1.001	1.125	.187
1"	.999	1.251	1.375	.250
Tolerances	+0.0000	+0.00055	+0.000	+0.000
	-0.0005	-0.0000	-0.010	-0.005



GENERAL DIMENSIONS

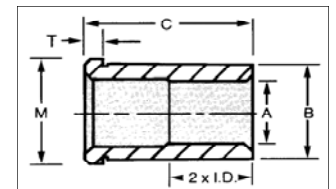
Nom. ID	A	B	M	T
3/4	.7505	1.1255	1.250	3/16
7/8	.8755	1.2505	1.375	3/16
1"	1.0005	1.3755	1.500	3/16
1-1/4	1.2505	1.6255	1.750	3/16
1-1/2	1.5005	2.0005	2.125	3/16
2"	2.0005	2.5005	2.625	3/16
2-1/2	2.5005	3.2505	3.375	3/16

For Correct product, order by Part Number and insert "A" diameter where (dia) appears.
Example: For a 2-7/8" long Shoulder Bushing with a 2-1/2" diameter, BSH-5-212

Part Number	C
BSH-1-(dia)	7/8
BSH-2-(dia)	1-3/8
BSH-3-(dia)	1-7/8
BSH-4-(dia)	2-3/8
BSH-5-(dia)	2-7/8
BSH-6-(dia)	3-3/8
BSH-7-(dia)	3-7/8
BSH-8-(dia)	4-3/8
BSH-9-(dia)	4-7/8
BSH-10-(dia)	5-7/8

**TEVAC SHOULDER BUSHINGS
STEEL HARDENED AND PRECISION GROUND**

TOLERANCES	
INSIDE DIAMETER (A)	+0.0005 -0.0000
OUTSIDE DIAMETER (B)	+0.0005 -0.0000
HEAD DIAMETER (M)	+0.000 -0.010
HEAD THICKNESS (T)	+0.000 -0.005



DIAMETERS

- A = 3/4"
- A = 7/8"
- A = 1"
- A = 1-1/4"
- A = 1-1/2"
- A = 2"
- A = 2-1/2"

Note:
Solid Aluminum Bronze and Self-Lubricating also available.
Call for pricing.